

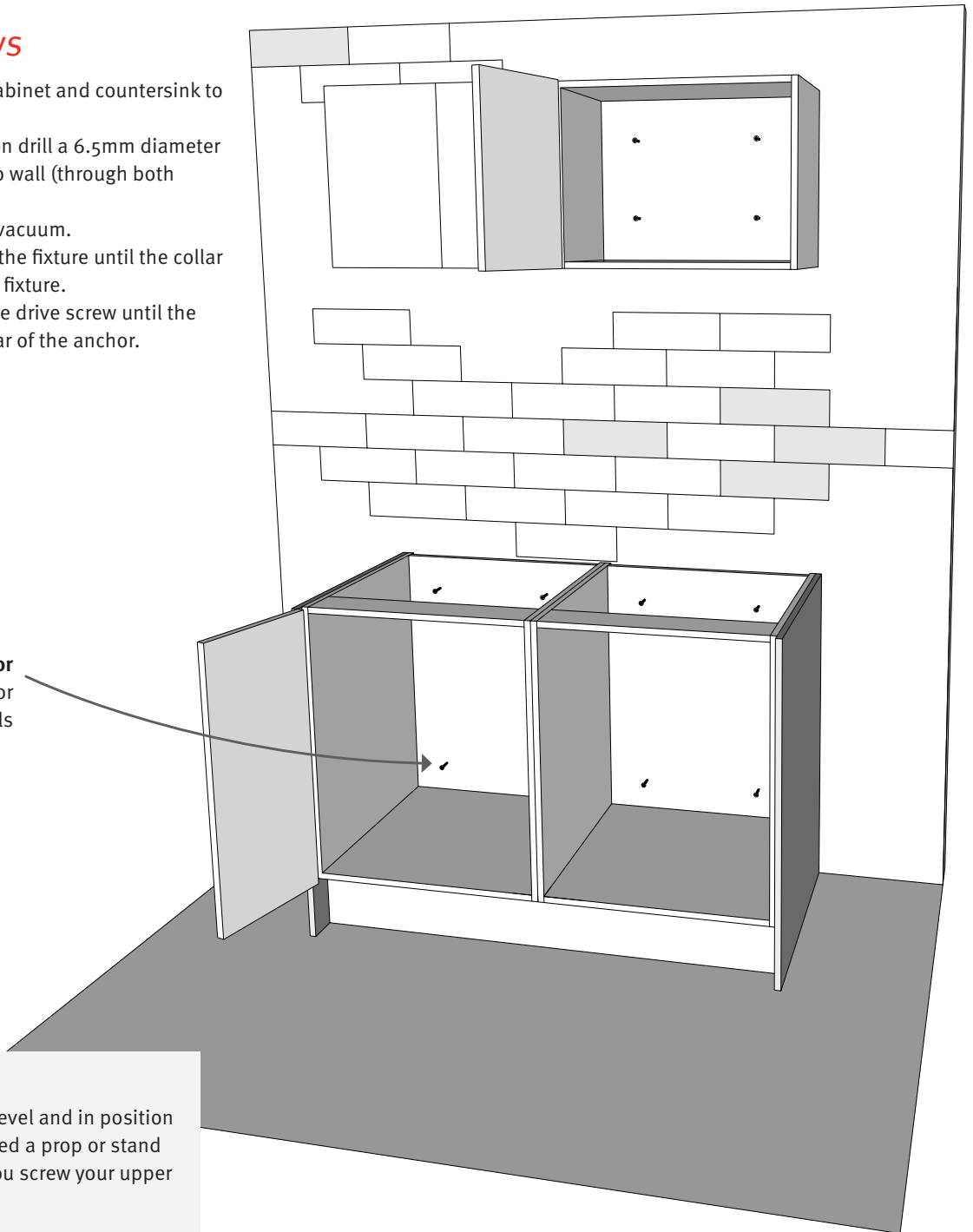
Wall Screws (Masonry/Brick/Concrete)

When installing your cabinets to masonry walls (including brick, stone and concrete) you will need to use Nylon Anchors. These special fixings have a nylon body that expands to fill the screw hole as tightened.

Fixing Wall Screws

- 1** Drill a location hole into cabinet and countersink to suit nylon anchor.
- 3** With the cabinet in position drill a 6.5mm diameter hole and 80mm depth into wall (through both cabinet & wall).
- 4** Remove the debris with a vacuum.
- 5** Insert the anchor through the fixture until the collar of the anchor contacts the fixture.
- 6** Screw or hammer home the drive screw until the head is flush with the collar of the anchor.

Nylon Anchor
Suitable for
masonry walls



IMPORTANT TIP

Make sure your cabinet is level and in position prior to drilling. You will need a prop or stand to take the weight whilst you screw your upper cabinets to the wall.

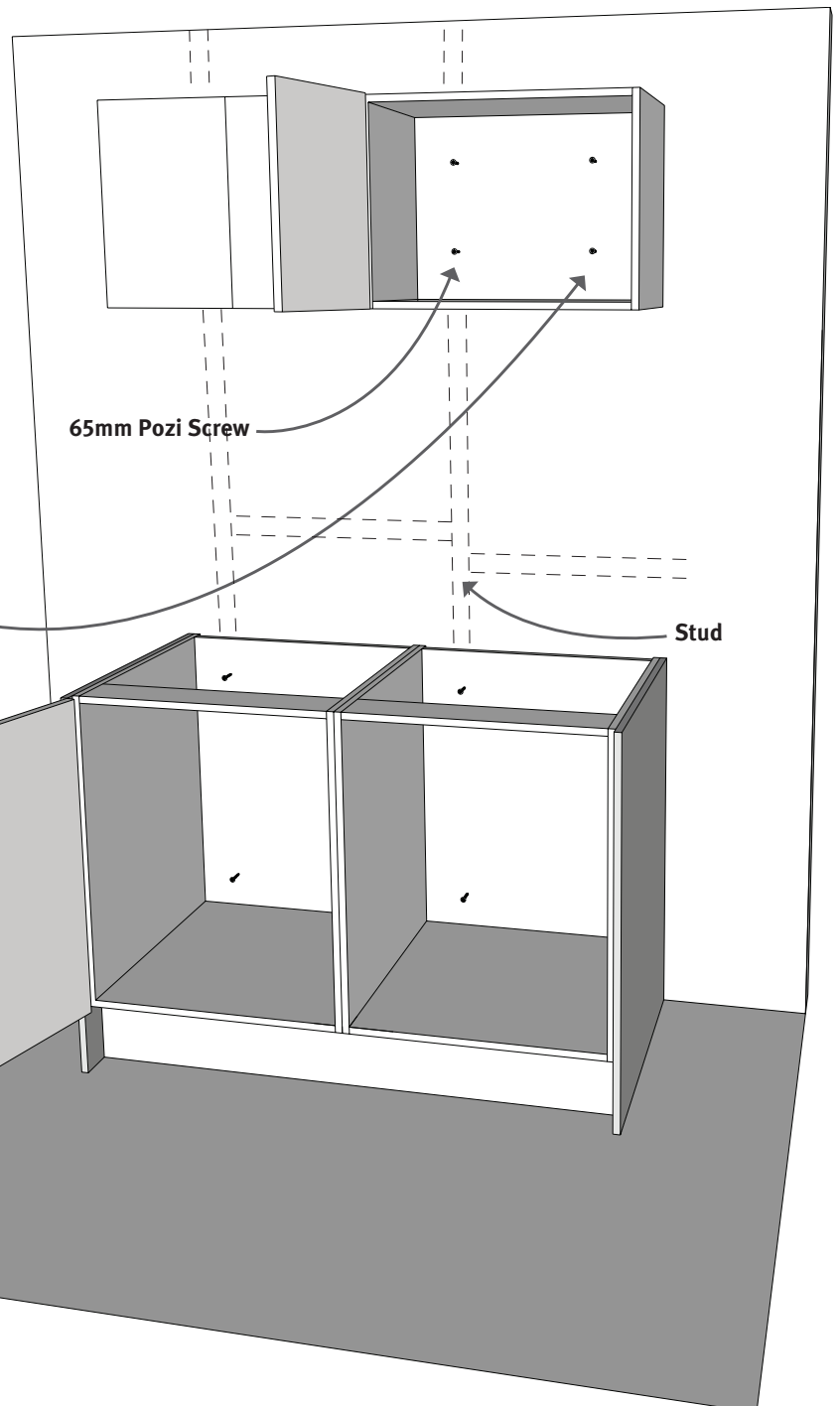
Wall Screws (Stud & Plasterboard)

When installing your cabinets to stud and plasterboard walls you will need to use 65mm Pozi screws when screwing to the studs and use Nylon Plasterboard Anchors (commonly called WallMate Anchors) when screwing to plasterboard. It is imperative that each cabinet is screwed to a wall stud. Please see Upper Cabinet installation guide for full install details.

Fixing Wall Screws

- 1 Place cabinet in position.
- 2 Pre-drill location holes through cabinet into wall and studs
- 3 Remove cabinet
- 4 Screw WallMate anchors into plasterboard location holes as drilled in step 2.
- 5 Put cabinet back into position
- 6 For securing into stud, screw 65mm Pozi screws through cabinet and directly into the stud.
- 7 For securing into plasterboard, screw 65mm Pozi screws through the cabinet, into the head of the nylon plasterboard anchor.

Nylon Plasterboard Anchor first, then 65mm Pozi Screw



IMPORTANT TIPS

WallMate anchors will NOT hold upper cabinets to gyprock walls alone. Ensure each cabinet is hung to at least one stud.

Apply silicone to wall & upper cabinet for extra strength.

Be aware of potential power and phone cables within gyprock wall cavity.